

AVMAP

SATELLITE NAVIGATION

WX XM Weather Manual EKPIV / EKPIV PRO / Geopilot 2 Plus

AvMap/Navigation
133 Falmouth Rd Suite E Mashpee MA 02649
800.363.2627 Fax 508.539.4383
www.avmap.us / info@avmap.us

updated 7/23/09

WX XM addendum for EKP IV / EKP IV PRO / Geopilot 2 Plus

1	WX XM WEATHER OVERVIEW.....	3
	LOCATE THE WX WEATHER FEATURE	3
	TURN ON WX WEATHER FEATURE.....	3
	DISPLAY THE WX FEATURE ON THE MAP.....	4
2	PRODUCTS LIST	5
	NEXRAD & Precipitation Type.....	5
	METAR.....	6
	TAF.....	7
	LIGHTNING	8
	TFR.....	9

NOTE:

XM Weather requires a monthly subscription and a special WX XM Receiver to be connected to the GPS device. For WX-XM subscription information and radio activation, please call 1-800-985-9200. For receiver information and purchase, please contact AvMap Navigation at 1-800-363-2627.

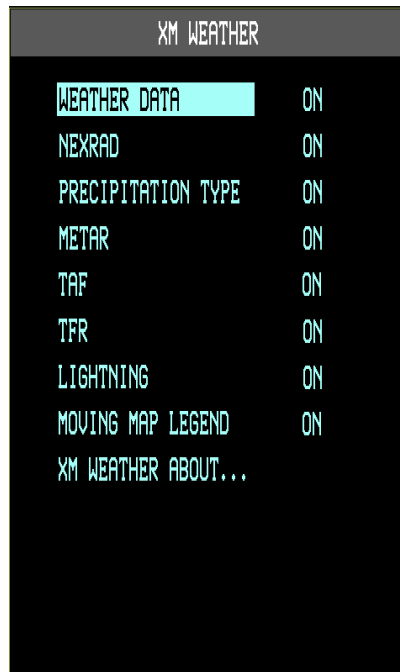
Your unit may require a Software update. You will need to have V2.12.153R or higher. If you do need an update, please got to www.avmap.us – You must be a registered User to download.

- 1.Download the Software from the Website. You will then have to load the new SW file(s) ending ins .SWX
EKPIV / EKPIV Pro will have 2 SW Files / GP II Plus will only have 1 SW Files**
- 2.Insert your CF or SD Carde into a card reader on your computer and open it.**
- 3.You will see a "Charts" folder, 2 files that end in .SWX and a CMap2.cer file (and maybe a CMap.cer file too).**
- 4.You will want to replace the older .swx file(s) with the new ones you have downloaded from the Website. Delete the older .SWX file(s) from the Card**
- 5. Copy the NEW downloaded .SWX files onto Card.**

1 WX XM WEATHER OVERVIEW

LOCATE THE WX WEATHER FEATURE

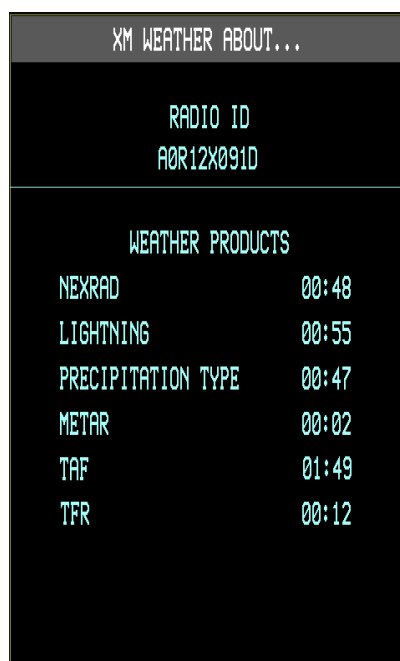
The WX WEATHER feature is located in the SYSTEM SETUP MENU and enables the user to activate the Weather function and select what products should be seen on the Moving Map.



TURN ON WX WEATHER FEATURE

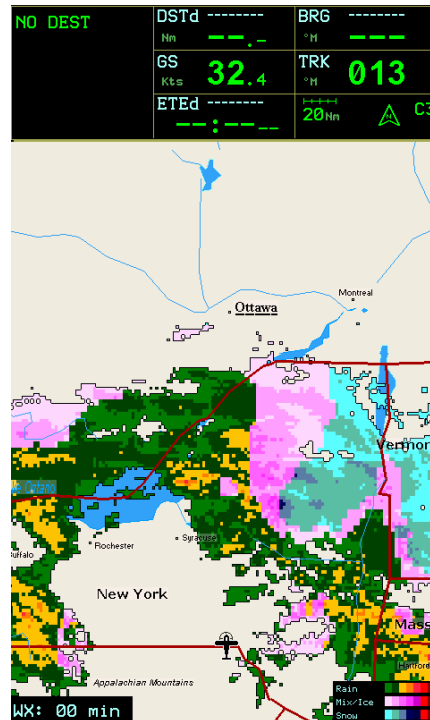
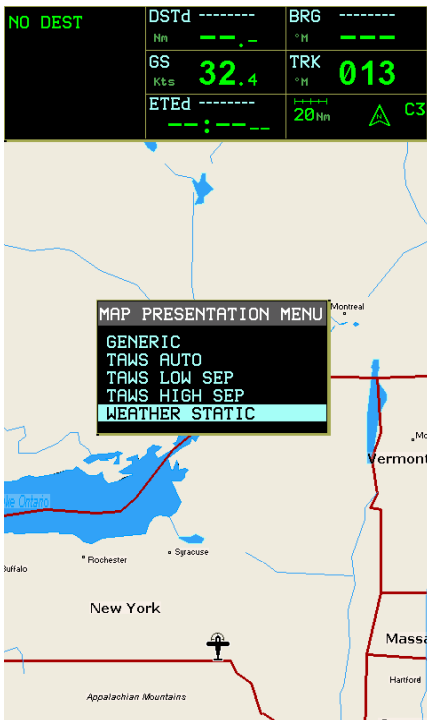
Connect the Receiver to the serial socket in the upper left part of the EKP IV or to the TMC port of the GPII+ and set WEATHER DATA to ON. The XM WEATHER ABOUT page will show the receiver ID. The start up procedure can take several minutes especially when the receiver is used for the first time. In this case the EKP IV / GPII+ should be left powered on and connected to the receiver until the first WX XM products are received. Once the procedure is finished, timers will start showing the age of each received products in the XM WEATHER ABOUT page.

NOTE: A subscription to WX XM service is needed for products to receive data.



DISPLAY THE WX FEATURE ON THE MAP

While on the Moving Map hold CYCLE (EKP IV) or hold MENU (GPII+) to enter the Map Presentation Menu and Select WEATHER STATIC.



This will enable the display of weather data on the navigator. At any time the MAP PRESENTATION MENU can be reselected in order to return to the normal GENERIC Moving Map Mode or to the TAWS mode.

Once in WEATHER STATIC mode a timer in the bottom left corner of the screen will show the elapsed time since the last NEXRAD product was received by the navigator.

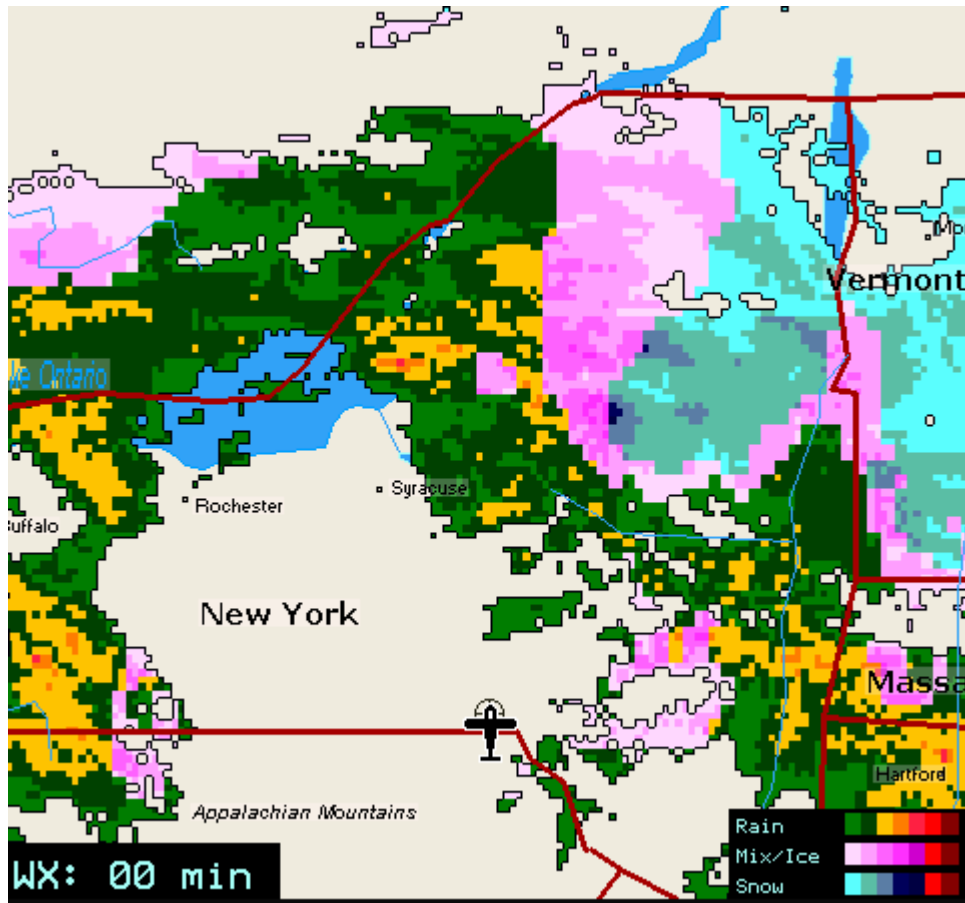
In order to see NEXRAD color pattern legend on the bottom right side of the Moving Map, on the XM WEATHER page set Moving Map Legend to ON.

2 PRODUCTS LIST

NEXRAD & Precipitation Type

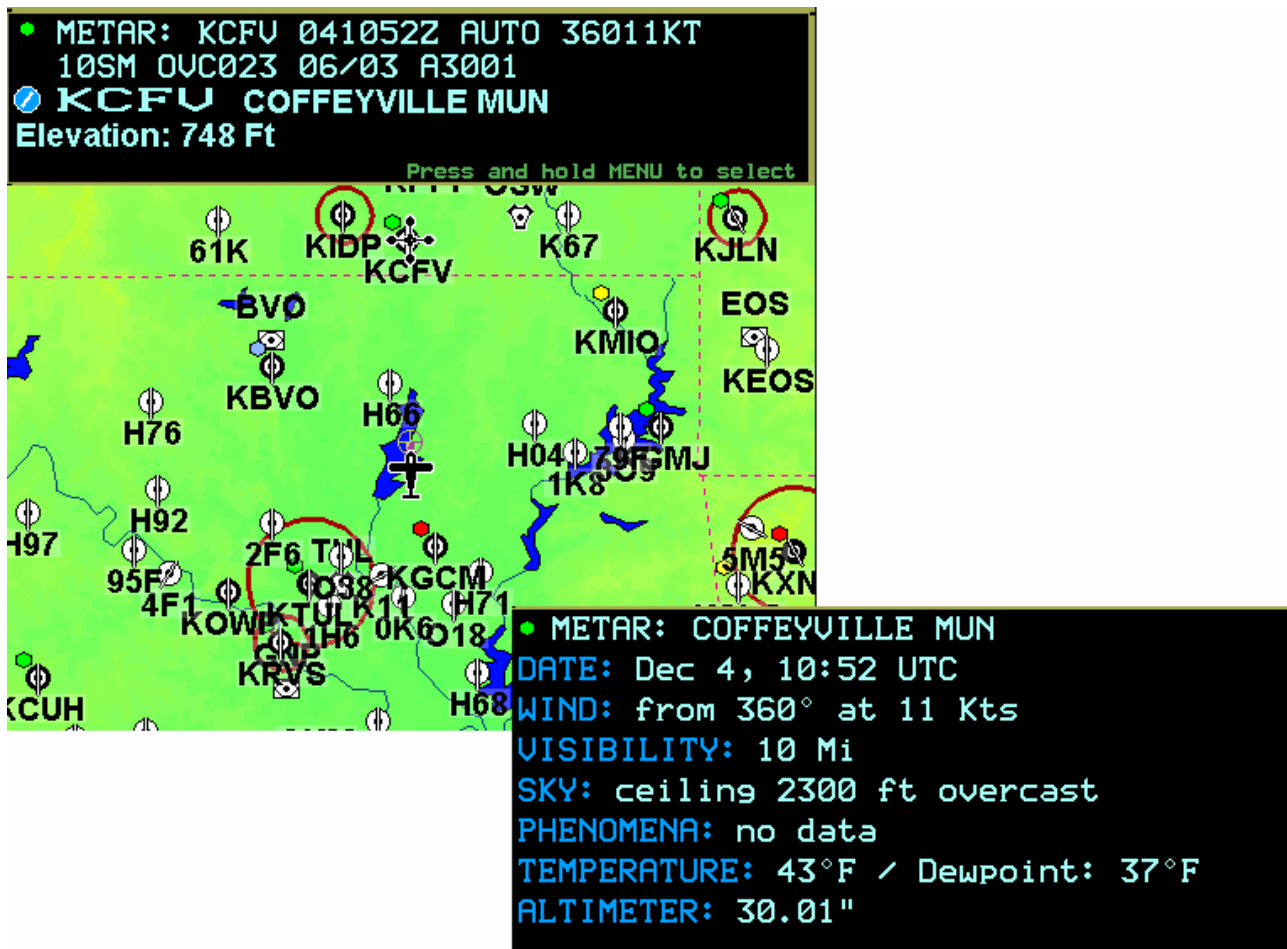
NEXRAD (NEXt Generation RADar) product is integrated with the Precipitation Type product to display precipitation phenomena. Each phenomena is represented in shades of green in case of rain, purple in case of mixed rain/snow and blue in case of snow.

A legend for the product can be enabled in the WX XM Menu and shown on the bottom right of the screen.



METAR

METAR (METereological Aeronautical Reports) is a format for reporting weather information. When METAR data relative to an airport is available, a color coded hexagon is shown on the upper left side of its icon. In order to see METAR data move the cursor over the airport, they will be shown on the quick info popup window. More detailed information can be accessed by holding the MENU key and selecting the first METAR line with the ENTER key.



METAR LEGEND :



VFR (ceiling higher than 3000 feet AGL and visibility greater than 5 miles)



Marginal VFR (ceiling between 1000-3000 feet AGL and/or visibility 3-5 miles)



IFR (ceiling between 500 to below 1000 feet AGL and/or visibility 1 mile to less than 3 miles)



Low IFR (ceiling below 500 feet AGL or visibility less than 1 mile)

TAF

TAF (Terminal Area Forecast) is a 24-hour forecast issued by the National Weather service for several airports in the US. These forecasts include: wind, visibility, precipitation phenomena and wind shear. Go over an airport with the cursor to check if TAF data is present, if so an excerpt of the first forecast will be seen in the quick info. To see the complete forecast, hold the MENU key and select the first TAF line with the ENTER key, you will be able to check all the bulletins and switch among them by moving the cursor.

• METAR: KJFK 081351Z URB03KT 10SM
FEW250 23/11 A3019
TAF: KJFK 081421Z 081412 33005KT
P6SM SKC...

📍 **KJFK KENNEDY INTL**
📏 338 Ft Single obstacle
📍 **JFK 115.90 KENNEDY (NEW YORK)**
Elevation: 13 Ft
Press ENTER for detailed information

TAF: KENNEDY INTL [1/5]
DATE: Day 8, 14:21 UTC
WIND: from 330° at 5 Kts
VISIBILITY: 6 Mi
SKY: clear

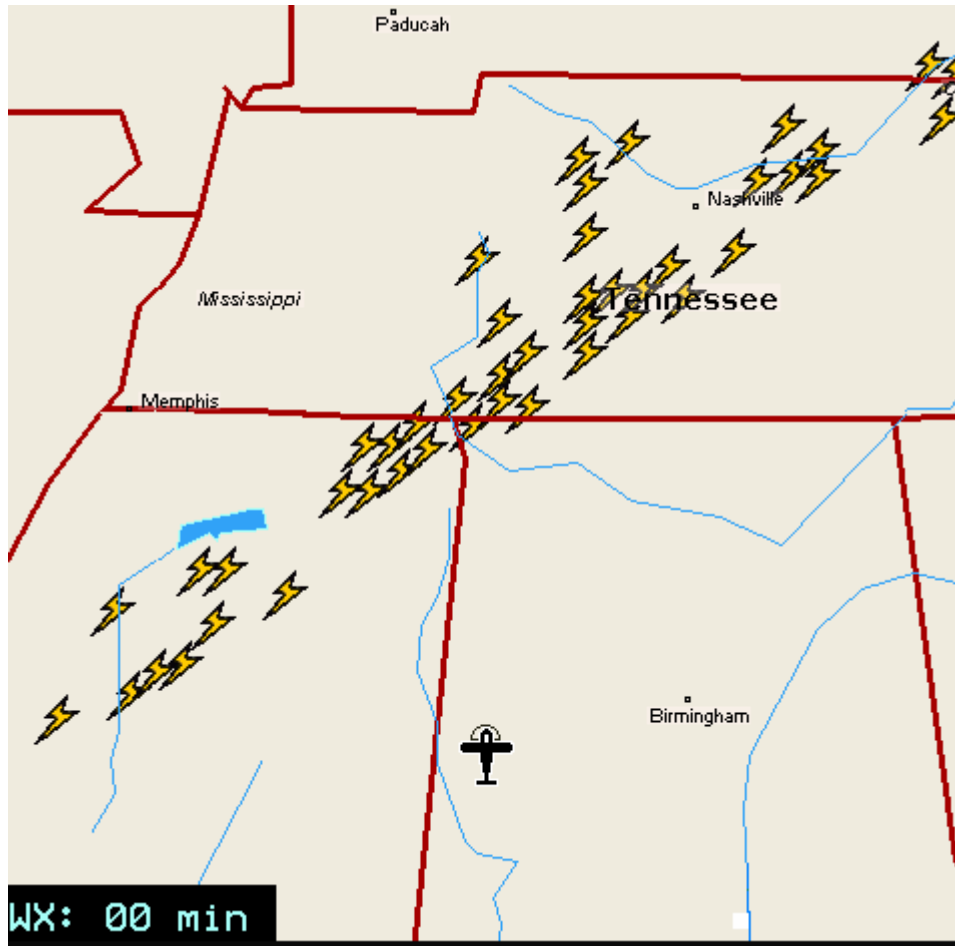
TAF: KENNEDY INTL [2/5]
Changing at 15:00 UTC
WIND: variable in direction at 5 Kts
VISIBILITY: 6 Mi
SKY: clear

TAF: KENNEDY INTL [3/5]
Changing at 17:00 UTC
WIND: from 180° at 10 Kts
VISIBILITY: 6 Mi
SKY: 6000 ft few

LIGHTNING

LIGHTNING product shows lightning strikes that have occurred within the past 7 minutes. Strike areas are shown with a lightning bolt icon over it.

NOTE: Only cloud to ground lightning is shown by this product.



TFR

TFRs (Temporary Flight Restrictions) are volumes of airspace where all aircraft are temporarily restricted from entering into unless a waiver has been issued. TFRs are routinely issued for occurrences such as sporting events, dignitary visits, military depots and forest fires. TFRs are represented as a dotted RED (active) or ORANGE (inactive) area. Go over an area covered by a TFR, press ENTER and select “Airspace Info” in the Cursor Menu to see detailed information regarding it.

